

YOUR NAME

Start the trail at the grey arrow
Follow the numbers from 1-14.

1 GRAFFITI

Look in the 2nd line of pews on the left. There is a photo attached to the back of the pew in front; it is an enlargement of some graffiti we found there. Who do you think did it?



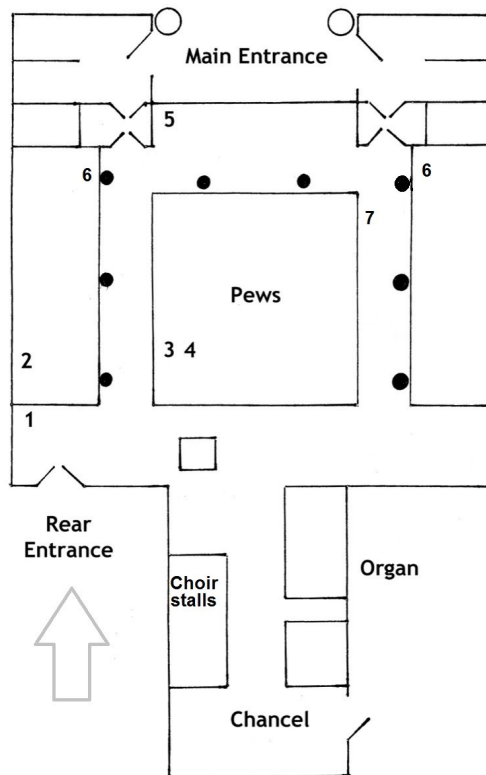
2 MARRIAGE WALL PLAQUE

On the left-hand wall is a slate plaque which marks the first marriage to take place in any Chapel like this. So where would marriages have to take place before 1837?

3 BRASS HANDLES



At the end of each pew is a brass handle with a little tray underneath it on the floor. What were these for?



4 HOOKS



On the back of each pew, underneath the shelf, there are pairs of hooks. What are these for? (the graffiti of question 1 is a clue)

5 SIDE DOOR



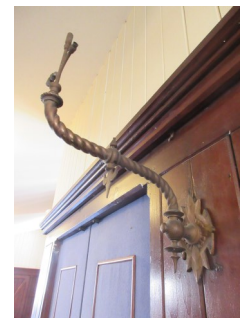
On the right of the blue doors there is a wooden door with a little sliding hatch at the base. What do you think the door is for?

7 PEW NUMBERS



On the sides of each line of pews you will see a number. Why did they bother to do this?

6 TUBES



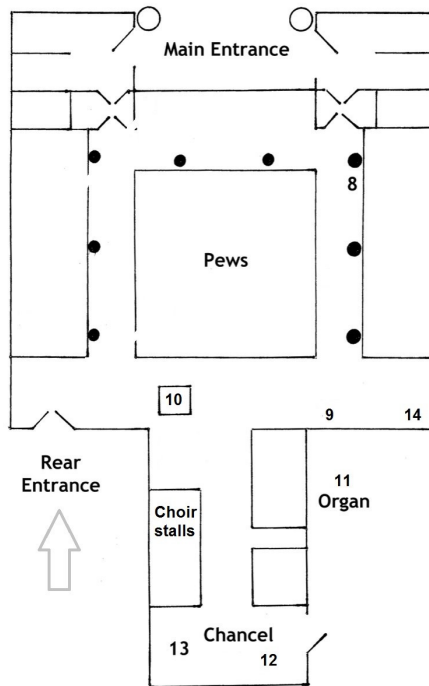
To the side of the blue doors you will see some curved and decorated brass tubes. Try to guess what these are for.

8 PLATE

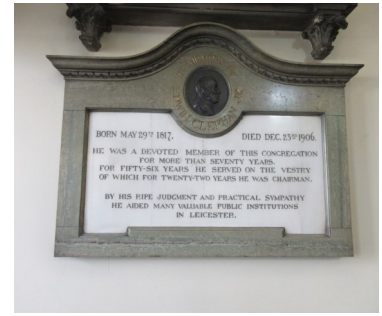


At the back on the side of the pew is a little ledge with a metal plate. Tick the box you think this was for.

- a. Handing out biscuits
- b. Collecting little notes with people's greatest wish written on them
- c. Collecting money to pay the minister



9 MEMORIALS



Look at the wall memorials to the married couple, surname Clephan. One is alabaster and the other is Swedish marble. Which is which?

Annie _____

Edwin _____

10 PULPIT

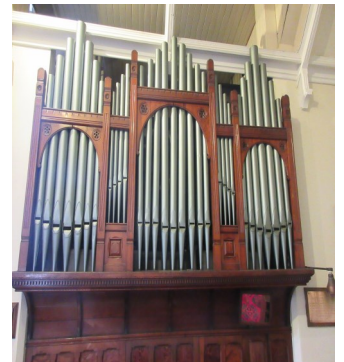
Why is the pulpit placed so high?



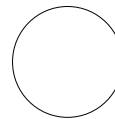
You can go up the stairs if you want and look down at all the pews. When the Chapel was full of people and the minister had to preach a long sermon it must have been very scary for him.

11 ORGAN

The organ pipes you can see are just for decoration. The real pipes are in the organ room behind.



How many pipes do you think there are? Put your answer in this circle.



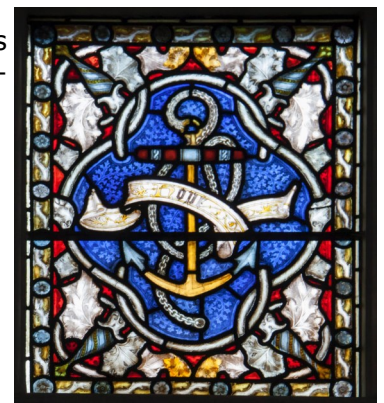
12 TILES

At the side of the top table are some floor tiles. Draw one of the designs below.

13 WINDOW

The window depicts three Christian virtues - Faith, Hope and Charity.

Which one is this?



14 NUMBER BOARD

In the corner is a board with numbers on. What were these for, and why is there a little coloured square at the top?

