

YOUR NAME

Start the trail at the grey arrow
Follow the numbers from 1-12.

1 FONT

How many sides has the font?

Is it hexagonal or octagonal?
Circle your answer.

What is the font used for?

B _ _ _ _ _



2 LECTERN

The lectern is a bookstand. What book might usually be found here?

H _ _ _ B _ _ _ _

What bird is on the lectern?



3 ROOD SCREEN

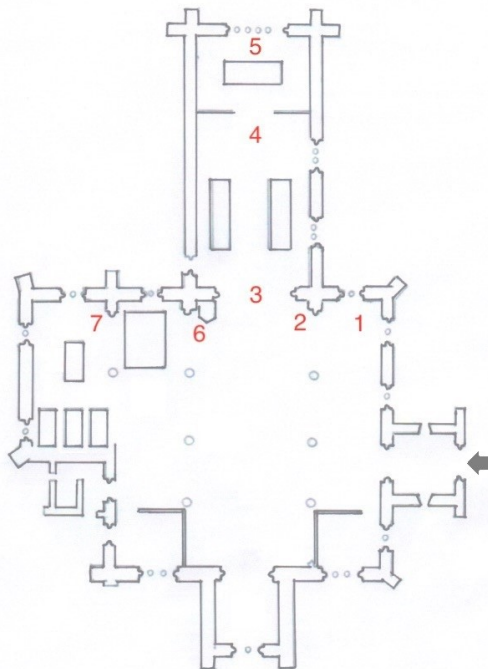
What is the purpose of a rood screen?

It s _ p _ r _ t _ s
the congregation from the
c _ o _ r



Find the brass plaque. What does it commemorate?

EAST



4 CHANCEL



What is the name of the table?

A _ _ _ _

What is it used for?

5 EAST WINDOW



Who are the two named saints you can see in the window?

Find these two symbols in the window. Tick the boxes when you see them.

A Ω

WEST

7 PISCINA IN THE NORTH CHAPEL

To the right of the altar is an alcove with a basin. This is called a piscina. Why do you think a basin is needed in a church?



6 PULPIT

Who would use the pulpit?

Why is it up so high?



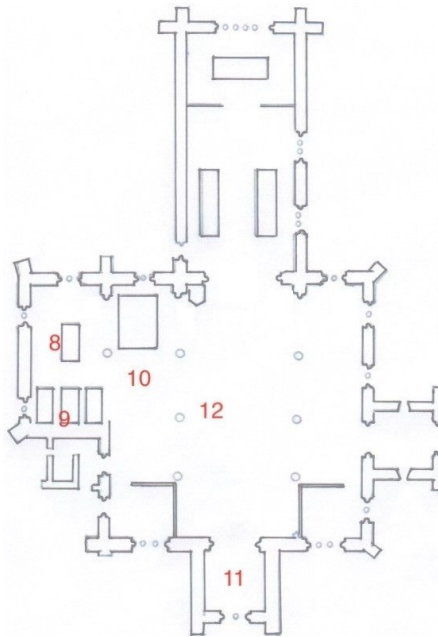
8 NORTH CHAPEL

How many monumental figures can you see?



What are the animals under Sir Hugh Willoughby's and his wife Margaret's feet?

EAST



9 MONEY BOX



How many locks are there on the money box?

Why do you think there are so many locks?

10 SMALL OVAL PLAQUE

Who is the plaque in memory of?



What is it made of?

11 BELL TOWER

What are these ropes for?

How many are there?



12 HASSOCKS

Sit down on one of the seats. Under the seats you will find some hassocks. What are they used for?

Design and draw your own hassock in box 13.



13 HASSOCK DESIGN

ENDPIECE

Thank you for completing our Children's Trail. We hope you have learned a lot about the church and will want to bring your friends and family to visit us in the future.