

**YOUR NAME**

Start the trail at the grey arrow  
 Follow the numbers from 1-14.

**1 PORCH**

What kind of creature is over the door to the church?

\_\_\_\_\_

\_\_\_\_\_



**2 FONT**

The outside of the font is made of \_\_\_\_\_

The inside of the font is made of L \_\_\_\_\_

What is put into the font for baptism?

W \_\_\_\_\_



**3 PLAQUE**

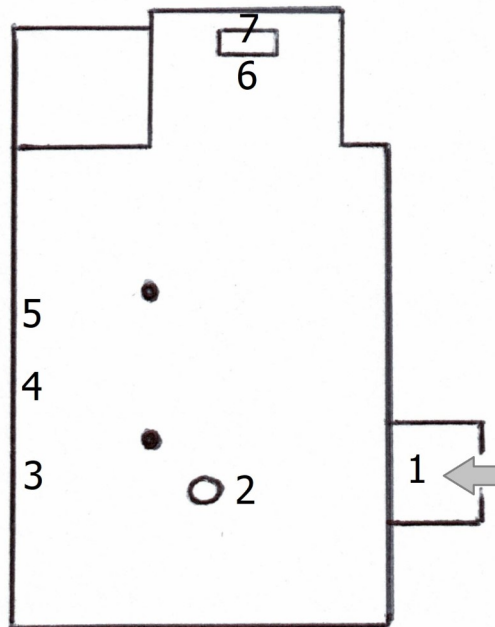
Look at the brass plaque on the wall.

When was William Bradford baptised in this church?  
 Clue: M=1000, D=500, L=50  
 X=10,

\_\_\_\_\_



**EAST**



**4 WINDOW**

Look at the William Bradford window. The Pilgrim Fathers sailed on a ship called The Mayflower. Draw the ship here.

Where did The Mayflower sail to?

\_\_\_\_\_

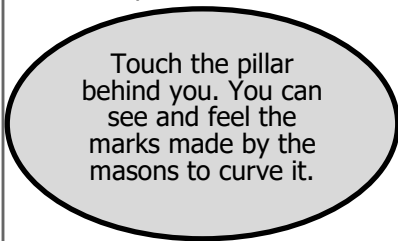
**5 COAT OF ARMS**

What animals do you see on the royal coat of arms?

- 1 \_\_\_\_\_
- 2 \_\_\_\_\_

Was the king called a) John  
 b) George or c) Charles

Clue: at top of the coat of arms!



**WEST**

**7 EAST WINDOW**

The middle section of the east window above the altar shows Jesus on the cross.  
 What letters can you see above Jesus?

\_\_\_\_\_



**6 ALTAR**

The altar is the focal point of the church. What stands on the altar?

\_\_\_\_\_

\_\_\_\_\_

What do you think the long stick by the altar is used for?

\_\_\_\_\_

\_\_\_\_\_

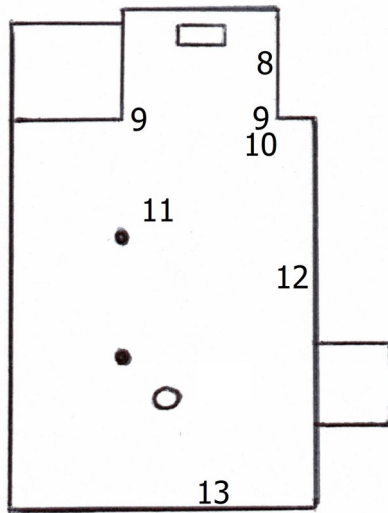


### 8 PISCINA

The piscina is used for holy washing up! — rinsing the communion vessels.  
What do you see at the bottom of the piscina?



### EAST



### 9 CHANCEL ARCH

Look at the chancel arch. Draw below one of the carved faces you can see at the tops of the pillars at either side.

### 10 PULPIT

Why is the pulpit so high?

---

---

How many steps are there?

---

---

What is it made of?



### 11 LECTERN

The lectern is a bookstand in wood or brass.

What is the name of the large book on the lectern?

---



### 12 WAR MEMORIAL

How many men from Austerfield were killed in World War One?

---

How many men from Bawtry were killed?

---

Were more men killed in the First or Second World War?

---

### 13 ROPES

What do you think the ropes are used for?

---

---

When were the bells restored?

---



### 14 ENDPICE

What is your favourite part of the church? Why?

---

Thank you for visiting St Helena's. We hope you have enjoyed visiting the church and completing The Arts Society Dukeries Trail of Discovery.