

**YOUR NAME**

Start the trail at the grey arrow  
Follow the numbers from 1-14.

**1 FONT**

What is put in the font for a baptism (Christening)

W \_ \_ \_ R



**2 PULPIT**

How many steps are there up to the pulpit?

Why do you think the pulpit is so high?



**3 BRASS WALL PLAQUE**

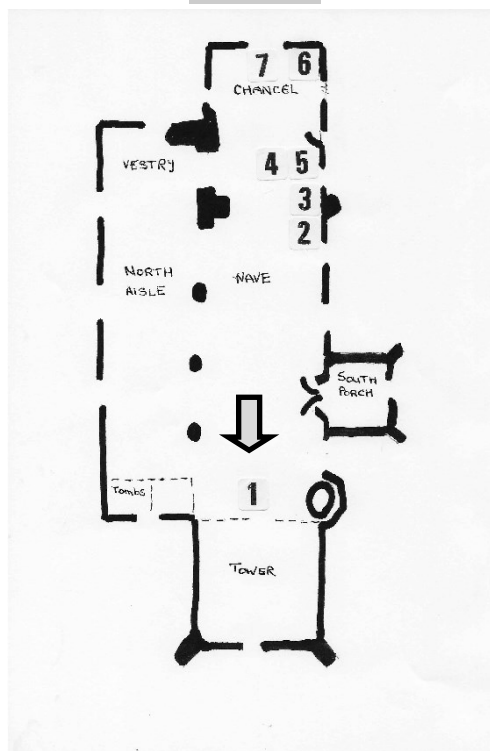
Who is the person named on the plaque?

\_\_\_\_\_

How long was he the Churchwarden for?



**EAST**



**WEST**

**4 SEDILIA**



Who would sit in this archway?

The name for the curved top of the archway is an **Ogee arch**.

**5 MEDIEVAL PANEL**

Who are the people in the painting?

What is the name of the picture?



**7 CHANCEL TABLE**

What colour is the cloth on the table today?



**6 PISCINA**

(Does it look like a washing up bowl?)  
What is a Piscina used for?

Draw a picture of the top of the arch?

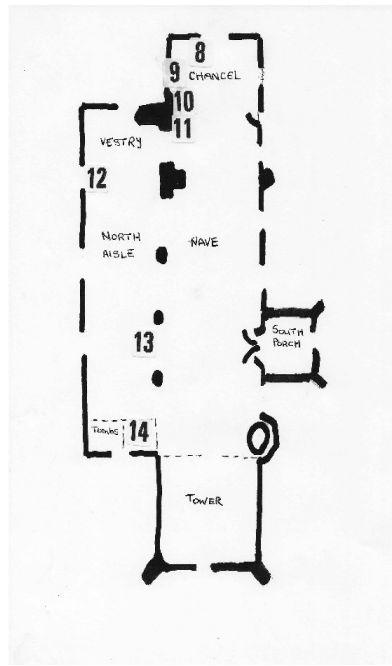
### 8 BISHOPS CHAIR

What does the carving on the back of the chair show?

A C R \_ \_ \_ \_ X



### EAST



### 9 TUDOR WINDOW

This window comes from Grafton Manor which was attacked during the Civil War in 1643. What do you think made the marks in the stonework to the left of the window?



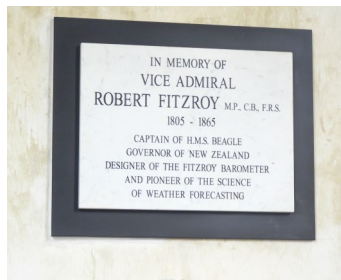
### 10 VICE ADMIRAL FITZROY

What was the name of the famous ship Robert FitzRoy was captain of?

B \_ \_ \_ \_ \_

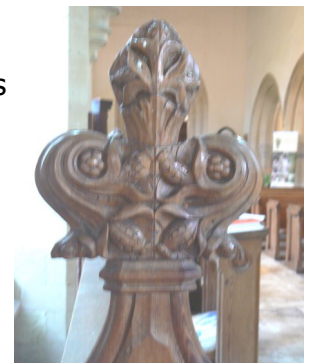
What is the name of the famous scientist who was on the ship with him?

D \_ \_ \_ \_ \_



### 11 POPPYHEADS

These carved pew ends are called 'Poppyheads'. How many different carvings of poppyheads can you see?

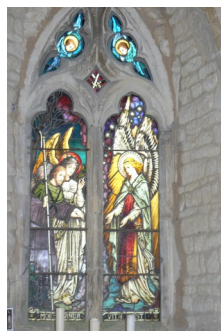


### 12 ANGEL WINDOW

What are the figures with blue wings at the top of the Angel window called?

C \_ \_ \_ \_ \_ S

How many Angels are there?



### 13 ELIZABETH WOODVILLE

Who did Elizabeth Woodville marry on May Day 1464?

What relation was she to Henry VIII?



### 14 JOHN WOODVILLE MONUMENT

Describe the carved figure on the top of the tomb.

What animal is at the figures feet? \_\_\_\_\_

