

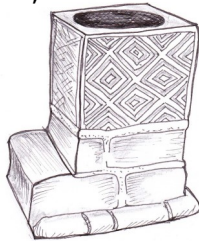
**YOUR NAME**

Start the trail at the grey arrow.  
Follow the numbers from 1-13

**1 FONT**

Find the font. A font is used for baptism, when someone is made a member of the church. What is put in it?

This font has a lid that used to be kept locked. Why?



**8 WALL PAINTING**

Look at the wall paintings at **8**. How many petals does each flower have?



Draw one of these flowers in this space.

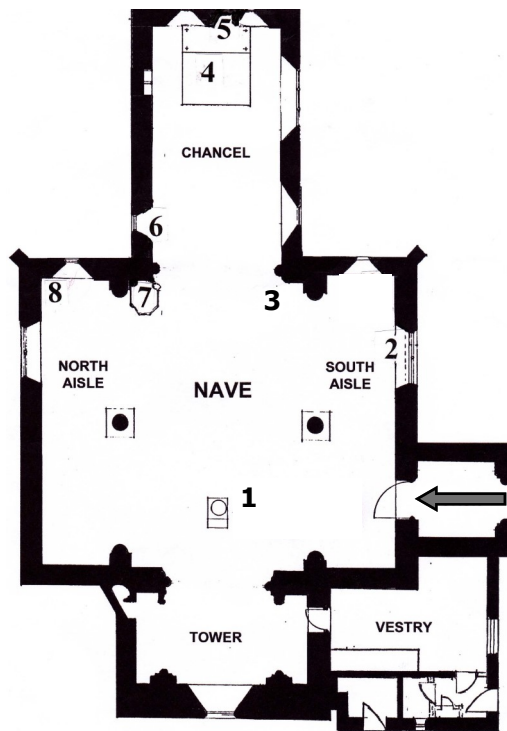


**2 TOMB**

Go to **2**. Look at the tomb. The figure's hair style shows that he was a priest or monk. What is unusual about this hair cut?

What is it called?

**EAST**



**7 PULPIT**

The pulpit (**7**) used to be painted. What colour do you think it was?

Above the pulpit is a canopy. What is it there for?

**3 LECTERN**

Find the wooden bookstand at **3**. This is called the lectern. Which book will be read from here during a service? Tick -

- a) Koran
- b) Torah
- c) Holy Bible

**6 STAINED GLASS**

Go to the stained glass window at **6**. What is Jesus holding?

Why?

In whose memory was the window made?

**WEST**

**4 ALTAR**

Now find the main altar (Holy Table) at **4**. What type of bird is shown on the front?

What is she doing?

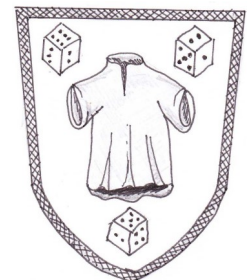


**5 REREDOS**

A panel behind the altar is called a reredos. (**5**) Look at the four shields here, showing symbols of the Crucifixion. The fourth shield shows a robe and three other objects.

What are these? \_\_\_\_\_  
Do you know what part these played in the story of Jesus' Crucifixion?

(See answer sheet if "No")



### 9 PISCINA

Go to **9**. Just below the window is a small arch over a broken basin with a drain.  
 Why would such a basin be needed in a church?

.....

.....

.....

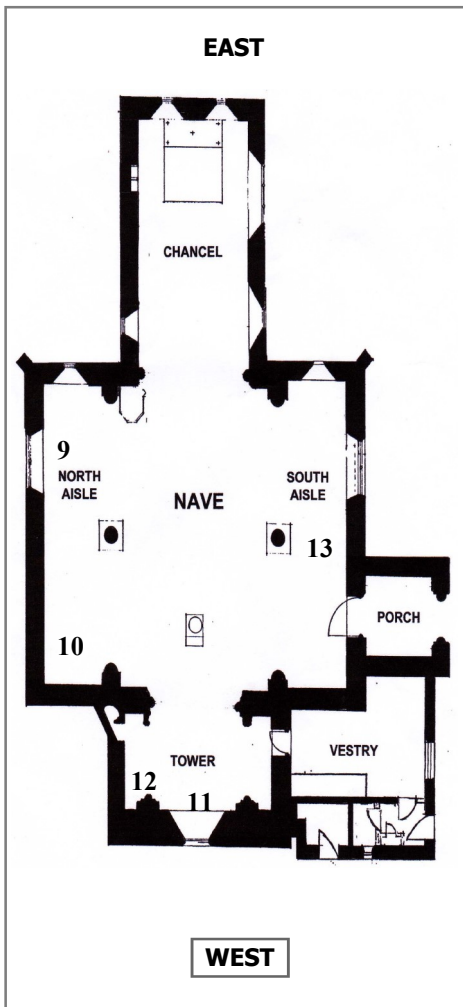
### 10 ORGAN

Find the organ at **10**. How many organ pipes can you see?

$$\begin{array}{r} \text{Red} \\ + \\ \text{Green} \\ \hline \text{Total} \end{array} = \underline{\hspace{2cm}}$$

Do you think that the longest pipe makes a higher or lower sound than the shortest?

\_\_\_\_\_



### 11 BELLS

Go to **11**. Find the five metal objects on a wooden plaque. What are these?

When were they first hung in the church?

Hanging from the roof of the Bell Tower are the bell ropes. Note the woolly grips on the ropes which are called "sallies". How many bells do you think that this church now has?

Why does a church have bells?

.....

.....

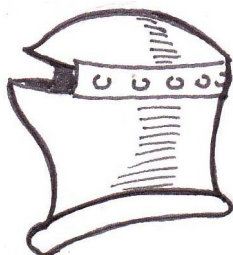
.....



### 12 HERALDRY

Stand in the Bell Tower at **12** and look up at the shields in each corner. Find the shield which has a helmet on top of it. On the helmet is an animal's head. This is the family crest. What animal is this?

On the helmet below draw the animal you would choose for your crest.



### 13 GROTESQUE



At the South door, turn around and look up to the top of the pillar, nearest the door, at **13**. Find the carved head. This is called a "grotesque", a strange and usually ugly carving found in churches and other old buildings. This head is sticking his tongue out at you! Any idea why?

On the other side of the pillar is another grotesque. What is he doing?

.....

.....

.....

### 14 ENDPIECE

Well done, you have now finished the Church trail; we hope you enjoyed it.

Which part did you find most interesting? ..... Perhaps you would like to come back with your family or friends to impress them with what you now know about this church?